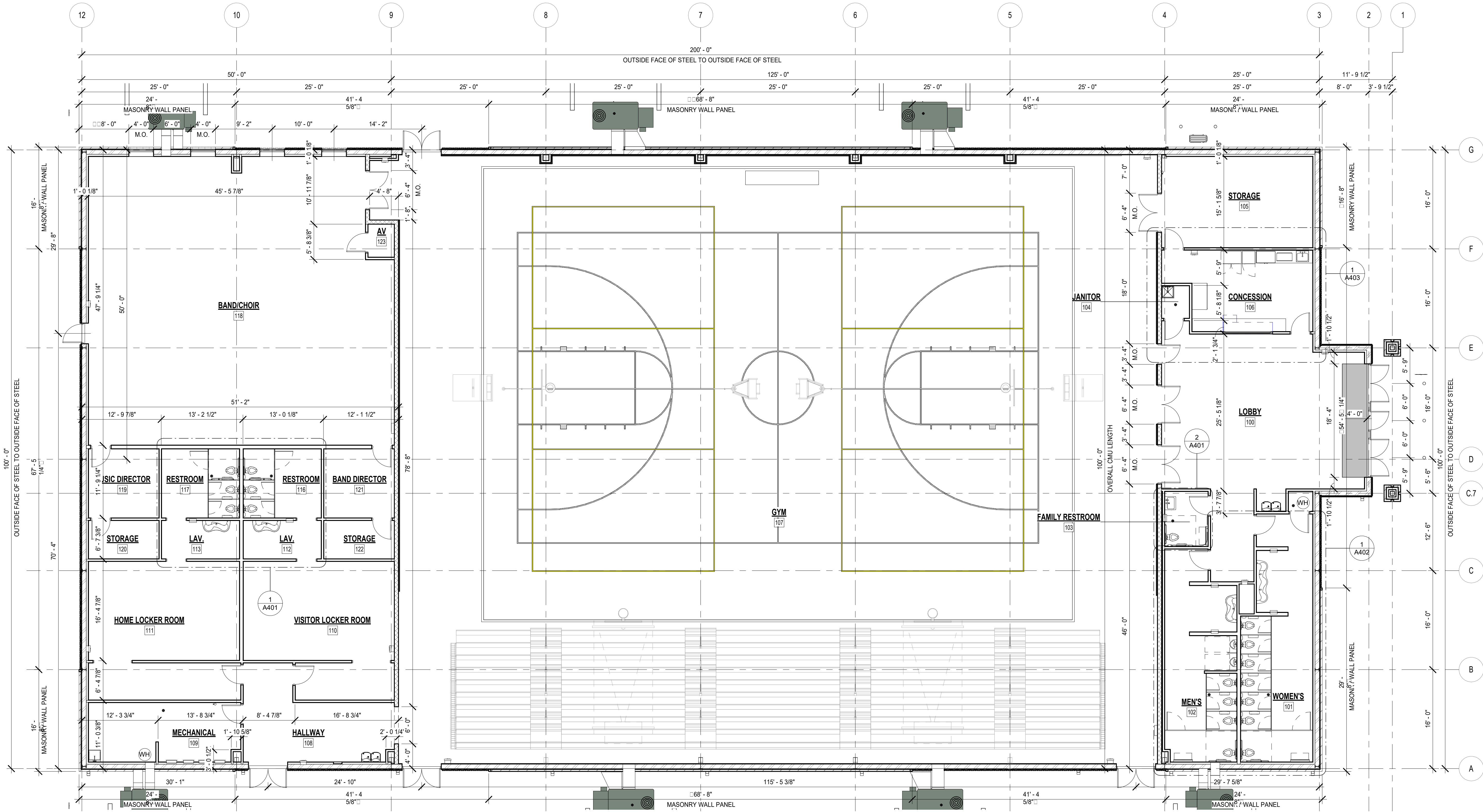
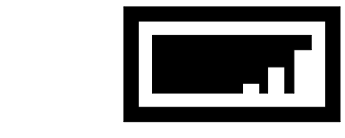


GENERAL PLAN NOTES:

- THESE DRAWINGS ARE INTENDED TO OUTLINE THE GENERAL SCOPE OF THE WORK. CONTRACTORS SHALL ALSO BE RESPONSIBLE FOR ADHERING TO ALL APPLICABLE CODES & GENERALLY ACCEPTED TRADE PRACTICES.
- ALL DIMENSIONS ARE FROM FACE OF STUD TO FACE OF STUD, MASONRY UNLESS NOTED OTHERWISE.
- PROVIDE NECESSARY BLOCKING/ANCHORING, AS REQUIRED FOR ANY & ALL ITEMS THAT MUST BE SECURED TO THE WALL, INCLUDING WALL MOUNTED CABINETS & EQUIPMENT, AUDIO/VISUAL, & SECURITY COMPONENTS. VERIFY LOCATIONS WITH OWNER.
- PROVIDE BLOCKING AT ALL WOOD BASE, CABINETS & SHELF BRACKETS & WALL MOUNTED RESTROOM EQUIPMENT.
- ALL DOORS TO BE LOCATED 6" FROM THE ADJACENT PERPENDICULAR STUD WALL FRAMING. PROVIDE 12" CLEAR ON PUSH SIDE OF DOOR (IF BOTH LATCH & CLOSER) & 18" CLEAR ON PULL SIDE OF ALL DOORS PER ADA.
- REFER TO DOOR SCHEDULE FOR SIZE, TYPE & FINISH OF ALL NEW DOORS & FRAMES.
- ALL WALLS THAT TERMINATE AT 6" ABOVE CEILINGS SHALL BE BRACED TO THE STRUCTURE ABOVE WITH 25 GA. 3/8" METAL STUD BRACES AT 48" O.C. MAXIMUM.
- PROVIDE CONTROL JOINTS ON CONTINUOUS GYPSUM BOARD SURFACES IN EXCESS OF 20'-0" AT A MAXIMUM INCREMENT OF 20'-0" ON CENTER, U.N.O.
- REFER TO PLUMBING PLANS FOR ALL SPECIFICATIONS & FIXTURE QUANTITIES. THE ARCHITECTURAL FLOOR PLAN SHOWS ONLY DESIGN INTENT.
- PLUMBING FIXTURES TO BE PROVIDED & INSTALLED BY G.C. UNLESS INDICATED OTHERWISE. COORDINATE ELECTRICAL & PLUMBING CONNECTIONS WITH OWNER/TENANT.
- REFER TO THE FINISH PLAN & SCHEDULE SHEETS FOR ALL INTERIOR FLOOR & WALL FINISHES, COLORS & MATERIALS. COORDINATE WITH THE SPECIFICATIONS & ARCHITECTURAL FLOOR PLANS AS REQUIRED.
- PROVIDE SIGNAGE AS REQUIRED BY CODE. REFER TO SPECIFICATIONS SECTION 10 1400-SIGNAGE.
- ALL FURNITURE & EQUIPMENT BY OTHERS, U.N.O. G.C. TO COORDINATE ALL BUILT-INS WITH OWNER PRIOR TO CONSTRUCTION.
- VERIFY ELECTRICAL OUTLET & DATA BOX LOCATIONS W/ OWNER AFTER ELECTRICAL BOX INSTALLATION & PRIOR TO CONDUIT INSTALLATION. COORDINATE WITH MILLWORK, FURNITURE & EQUIPMENT LOCATIONS. RUN EXPOSED CONDUIT IN CLEAN & ORDERLY MANNER.
- COORDINATE THE LOCATION & INSTALLATION OF ALL MECHANICAL & ELECTRICAL DEVICES, REGISTERS, FIXTURES, ETC. PRIOR TO INSTALLATION OF FINISH MATERIALS.



1 DIMENSION PLAN



107 1/2 N. PENNSYLVANIA AVE.
SUITE 2F
INDEPENDENCE, KANSAS 67301
620-331-6171
www.EchelonAD.com

CERTIFIED BY



NEW CONSTRUCTION
A NEW GYM FOR USD506
601 HIGH SCHOOL AVE., ALTAMONT, KS 67330

DRAWING

DIMENSION
PLAN

MANAGER
SAC

DRAWN BY
KG

REVISIONS

PROJECT NUMBER
23-09

DATE
8/14/2023

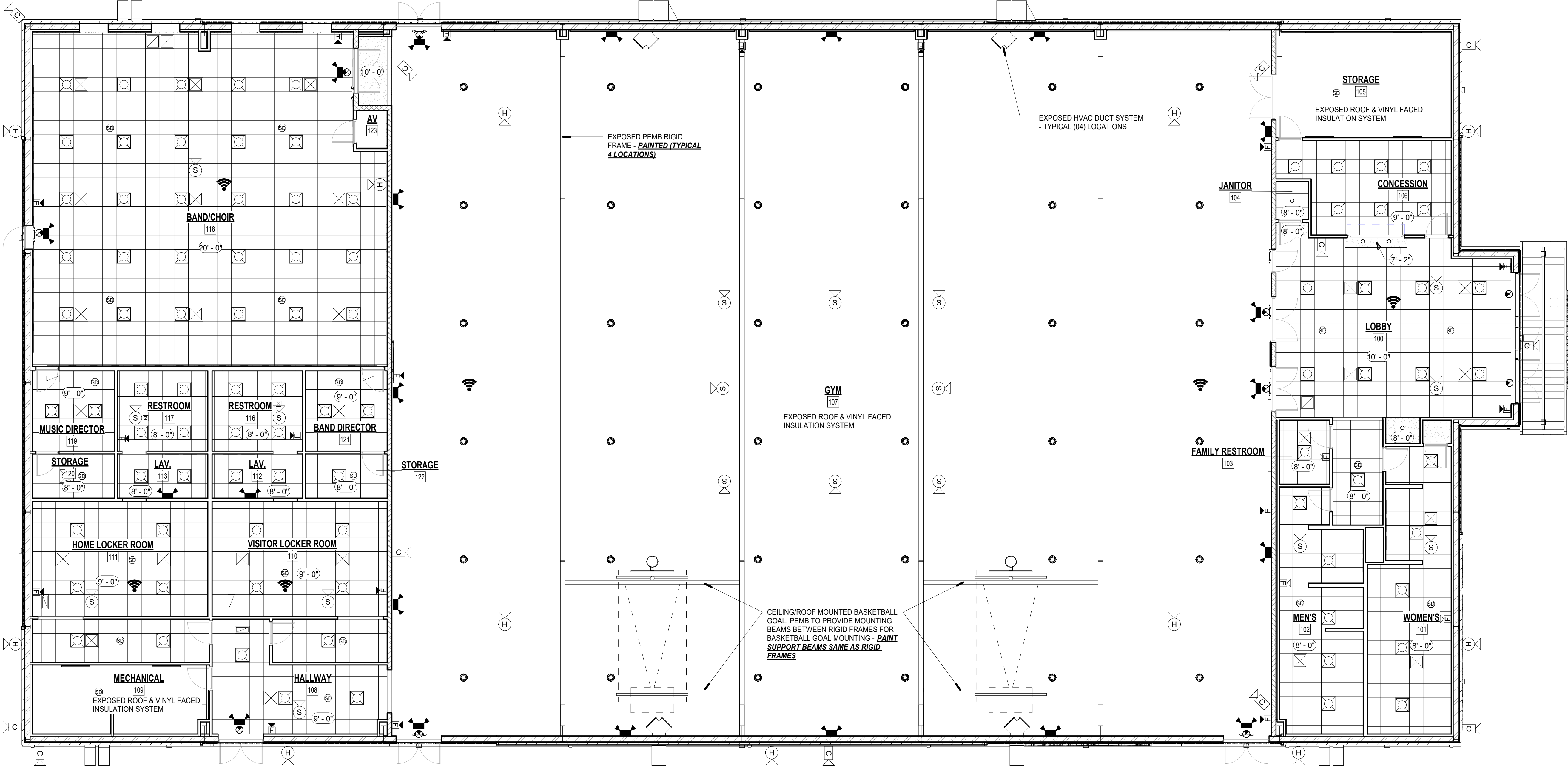
SHEET NUMBER

REFLECTED CEILING LEGEND

	2X2 CEILING TILE		EXIT DEVICE REF: MEP DWG'S
	GYPSUM BOARD SOFFIT		EMERGENCY LIGHT REF: MEP DWG'S
	2X2 LIGHT TROFFER REF: MEP DWG'S		SMOKE DETECTOR REF: MEP DWG'S
	RECESSED CAN LIGHT REF: MEP DWG'S		FIRE ALARM STROBE REF: MEP DWG'S
	HIGH BAY LIGHT REF: MEP DWG'S		FIRE ALARM HORN/STROBE REF: MEP DWG'S
	WALL MOUNT STRIP LIGHT REF: MEP DWG'S		WALL MOUNTED CAMERA REF: MEP DWG'S
	MECHANICAL RETURN AIR DIFFUSER REF: MEP DWG'S		HORN SYSTEM REF: MEP DWG'S
	MECHANICAL SUPPLY AIR DIFFUSER REF: MEP DWG'S		SPEAKER SYSTEM REF: MEP DWG'S
	MECHANICAL EXHAUST FAN REF: MEP DWG'S		WIRELESS INTERNET TRANSMITTER REF: MEP DWG'S
	DUCT WORK REF: MEP DWG'S		CLG ELEVATION HEIGHT INDICATOR

GENERAL CEILING NOTES:

- THESE DRAWINGS ARE INTENDED TO OUTLINE THE GENERAL SCOPE OF THE WORK. CONTRACTOR SHALL ALSO BE RESPONSIBLE FOR ADHERING TO ALL APPLICABLE CODES & GENERALLY ACCEPTED TRADE PRACTICES.
- THE CONTRACTOR SHALL NOTIFY THE ARCHITECT OF ANY DISCREPANCIES BETWEEN THE REFLECTED CEILING PLANS & THE ELECTRICAL DRAWINGS.
- REFER TO MECHANICAL & ELECTRICAL DRAWINGS FOR FIRE ALARM & EMERGENCY LIGHTING COMPONENTS.
- COORDINATE ALL MECHANICAL SYSTEM BULK HEADS & SIZES WITH MECHANICAL DRAWINGS PRIOR TO INSTALLATION OF SPRINKLER SYSTEM.
- THE REFLECTED CEILING PLANS INDICATE ONLY ARCHITECTURAL FEATURES (FINISHES, ELEVATIONS, ETC.) OF THE CEILING. DESIGN REFERS TO ELECTRICAL & HVAC PLANS FOR FIXTURE QUANTITIES, MANUFACTURER'S MODEL NUMBERS & EQUIPMENT SPECIFICATIONS. NOTIFY THE ARCHITECT IF THE REFLECTED CEILING PLANS DIFFER FROM THE HVAC & ELECTRICAL PLANS.
- SPRINKLER HEADS & RECESSED CAN LIGHTS ARE TO BE LOCATED IN THE CENTER OF THE AFFECTED CEILING PANEL WHERE THE CEILING PANEL CENTER REVEALS THE SPRINKLER HEAD OR LIGHT FIXTURE. SHALL BE LOCATED IN THE CENTER OF THE 2' x 2' PORTION OF THAT CEILING PANEL.
- PROVIDE ACCESS PANELS (FIRE-RATED IN RATED ASSEMBLIES) FOR ACCESS OF ALL SERVICEABLE MEP EQUIPMENT ABOVE HARD LID CEILINGS (COORDINATE SIZE & TYPE WITH MEP DRAWINGS & EQUIPMENT REQUIREMENTS).
- NEATLY FINISH ALL GYP. BRO. WALL TO DISSIMILAR MATERIAL TRANSITIONS WHERE TO REMAIN EXPOSED TO VIEW. USE TEAR-AWAY TYPE BEAD TRIM & SEALANT AS REQUIRED.
- PAINT STRUCTURAL ELEMENTS AT CEILING. REFERENCE FINISH PLAN.



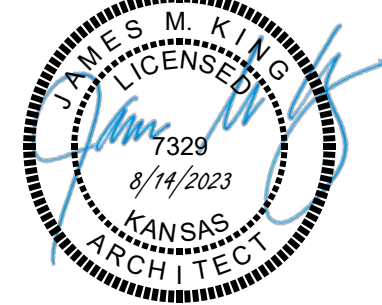
1 FIRST FLOOR REFLECTED CEILING PLAN

1/8" = 1'-0"



107 1/2 N. PENNSYLVANIA AVE.
SUITE 2F
INDEPENDENCE, KANSAS 67301
620-331-6171
www.EchelonAD.com

CERTIFIED BY



NEW CONSTRUCTION

A NEW GYM FOR USD506
601 HIGH SCHOOL AVE., ALTAMONT, KS 67330

DRAWING

REFLECTED
CEILING PLAN

MANAGER

SAC

DRAWN BY

KG

REVISIONS

PROJECT NUMBER

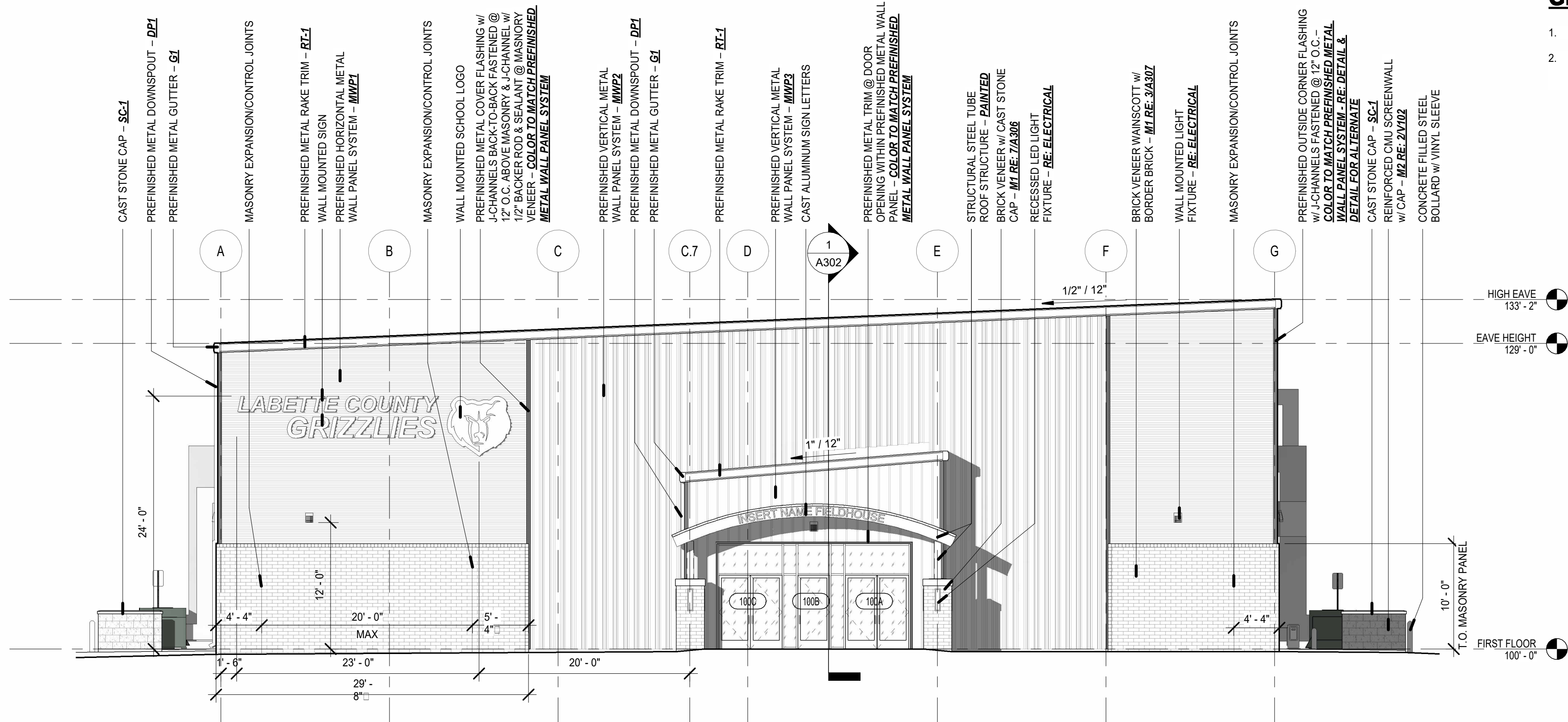
23-09

DATE

8/14/2023

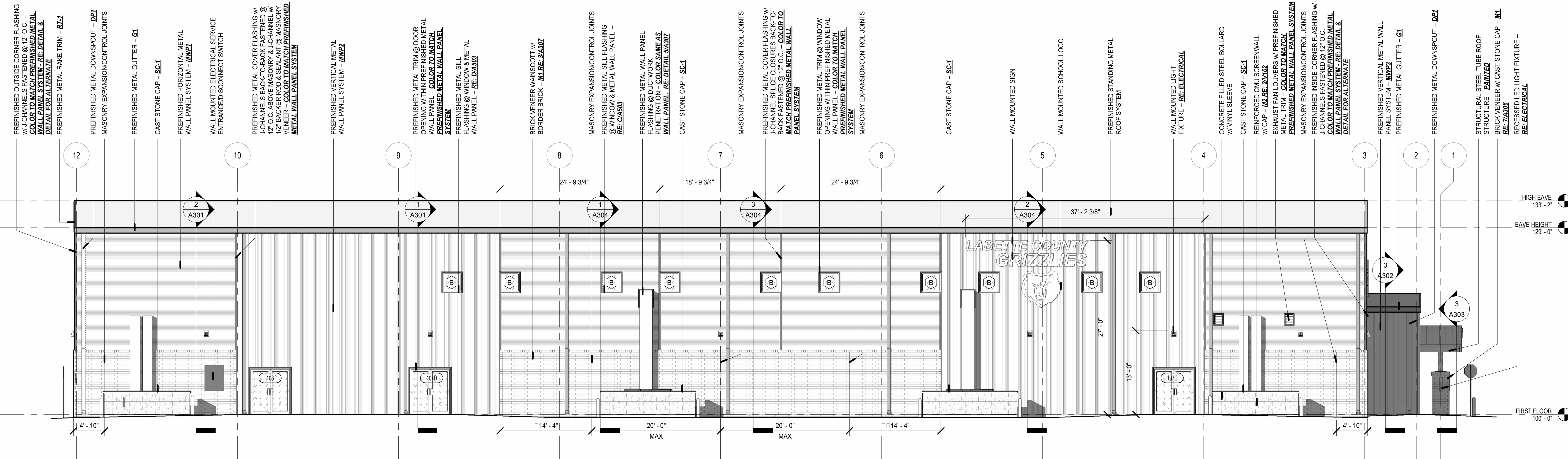
SHEET NUMBER

A103



1 EAST EXTERIOR ELEVATION

1/8" = 1'-0"



2 SOUTH EXTERIOR ELEVATION

1/8" = 1'-0"

GENERAL PLAN NOTES:

- REFER TO SHEET A503 FOR WINDOW TYPES/SIZES & LOCATIONS.
- EXTERIOR DOORS OTHER THAN MAIN ENTRY SHOWN SHOWN AS ALUMINUM STOREFRONT - **RE: A502 FOR H.M. FRAME & INSULATED METAL DOORS ALT. BID NOTE**

EXTERIOR ELEVATIONS FINISH SCHEDULE:

PREFINISHED METAL WALL PANELS

- MWP1** - PAC-CLAD PRECISION SERIES BOX RIB BOX RIB 1, COLOR SANDSTONE
MWP2 - PAC-CLAD PRECISION SERIES BOX RIB BOX RIB 4, COLOR SANDSTONE
MWP3 - PAC-CLAD REVEAL WALL PANELS, COLOR GRAPHITE

G1 - GUTTERS PAC-CLAD CARDINAL RED

DP1 - DOWNSPOUT, PAC-CLAD CARDINAL RED

RT-1 - RAKE TRIM, PAC-CLAD CARDINAL RED

MASONRY

- M1** - BRICK MASONRY: KANSAS BRICK & TILE, UTILITY BRICK, #530 DARK BURGANDY
M2 - CMU; CAPITOL CONCRETE, GROUND FACED CMU SHADOW

SF-1 - ALUMINUM STOREFRONT, EQUAL TO KAWNEER, CHAMPAGNE OR PLATINUM ICE

SC-1 - CAST STONE CAP - COLOR, LIMESTONE

ECHELON
ARCH + DESIGN



107 1/2 N. PENNSYLVANIA AVE.
SUITE 2F
INDEPENDENCE, KANSAS 67301

620-331-6171
www.EchelonAD.com

CERTIFIED BY



NEW CONSTRUCTION

A NEW GYM FOR USD506
601 HIGH SCHOOL AVE., ALTAMONT, KS 67330

DRAWING

EXTERIOR ELEVATIONS

MANAGER

SAC

DRAWN BY

KG

REVISIONS

PROJECT NUMBER

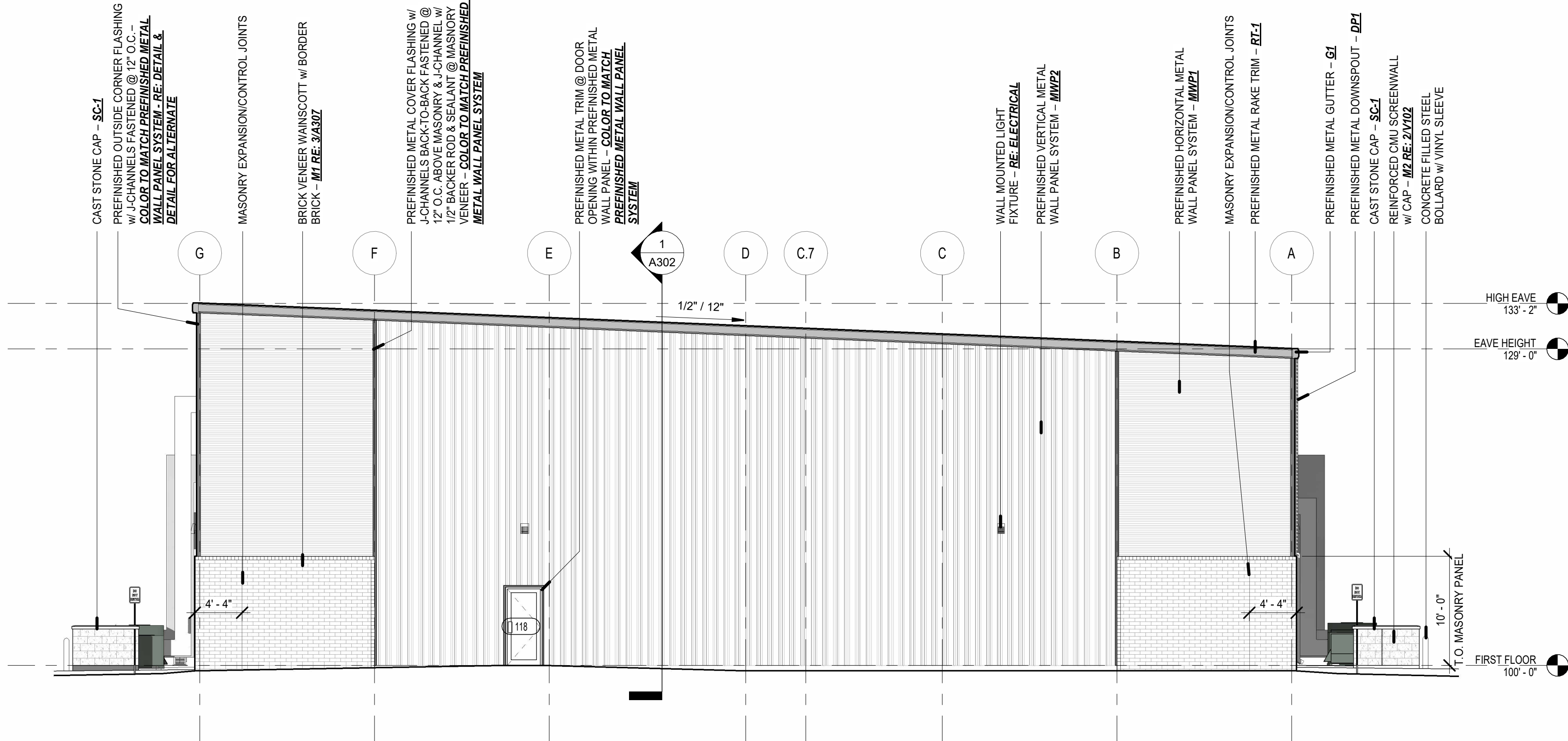
23-09

DATE

8/14/2023

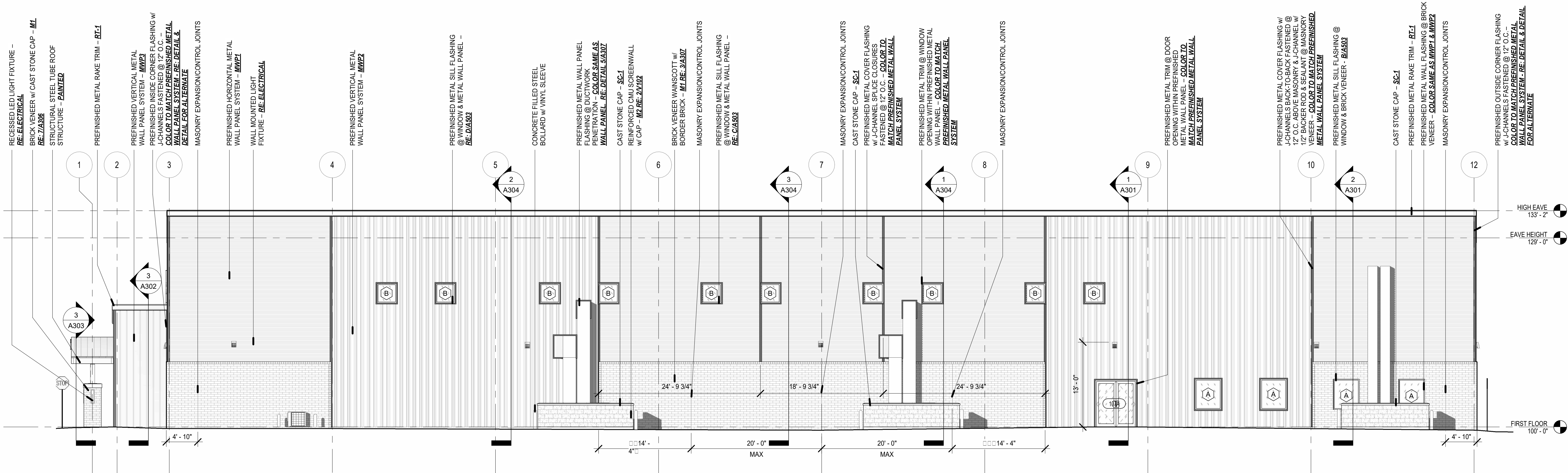
SHEET NUMBER

A201



1 WEST EXTERIOR ELEVATION

1/8" = 1'-0"



2 NORTH EXTERIOR ELEVATION

1/8" = 1'-0"

GENERAL PLAN NOTES:

- REFER TO SHEET A503 FOR WINDOW TYPES/SIZES & LOCATIONS.
- EXTERIOR DOORS OTHER THAN MAIN ENTRY SHOWN SHOWN AS ALUMINUM STOREFRONT - **RE: A502 FOR H.M. FRAME & INSULATED METAL DOORS ALT. BID NOTE**

EXTERIOR ELEVATIONS FINISH SCHEDULE:

PREFINISHED METAL WALL PANELS
MWP1 - PAC-CLAD PRECISION SERIES BOX RIB BOX RIB 1, COLOR SANDSTONE
MWP2 - PAC-CLAD PRECISION SERIES BOX RIB BOX RIB 4, COLOR SANDSTONE
MWP3 - PAC-CLAD REVEAL WALL PANELS, COLOR GRAPHITE

G1 - GUTTERS PAC-CLAD CARDINAL RED

DP1 - DOWNSPOUT, PAC-CLAD CARDINAL RED

RT-1 - RAKE TRIM, PAC-CLAD CARDINAL RED

MASONRY

M1 - BRICK MASONRY: KANSAS BRICK & TILE, UTILITY BRICK, #530 DARK BURGANDY
M2 - CMU; CAPITOL CONCRETE, GROUND FACED CMU SHADOW

SF-1 - ALUMINUM STOREFRONT, EQUAL TO KAWNEER, CHAMPAGNE OR PLATINUM ICE

SC-1 - CAST STONE CAP - COLOR, LIMESTONE

ECHELON
ARCH + DESIGN



107 1/2 N. PENNSYLVANIA AVE.
SUITE 2F
INDEPENDENCE, KANSAS 67301

620-331-6171
www.EchelonAD.com

CERTIFIED BY



NEW CONSTRUCTION

A NEW GYM FOR USD506
601 HIGH SCHOOL AVE., ALTAMONT, KS 67330

DRAWING

EXTERIOR ELEVATIONS

MANAGER

SAC

DRAWN BY

KG

REVISIONS

PROJECT NUMBER

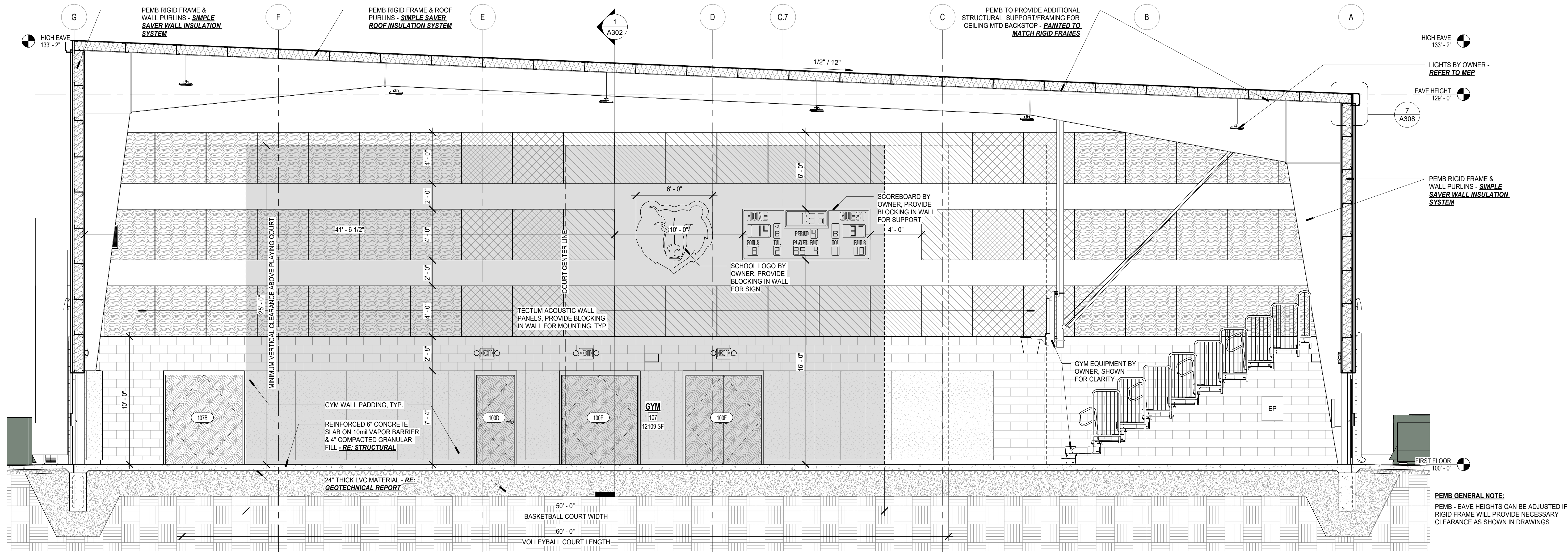
23-09

DATE

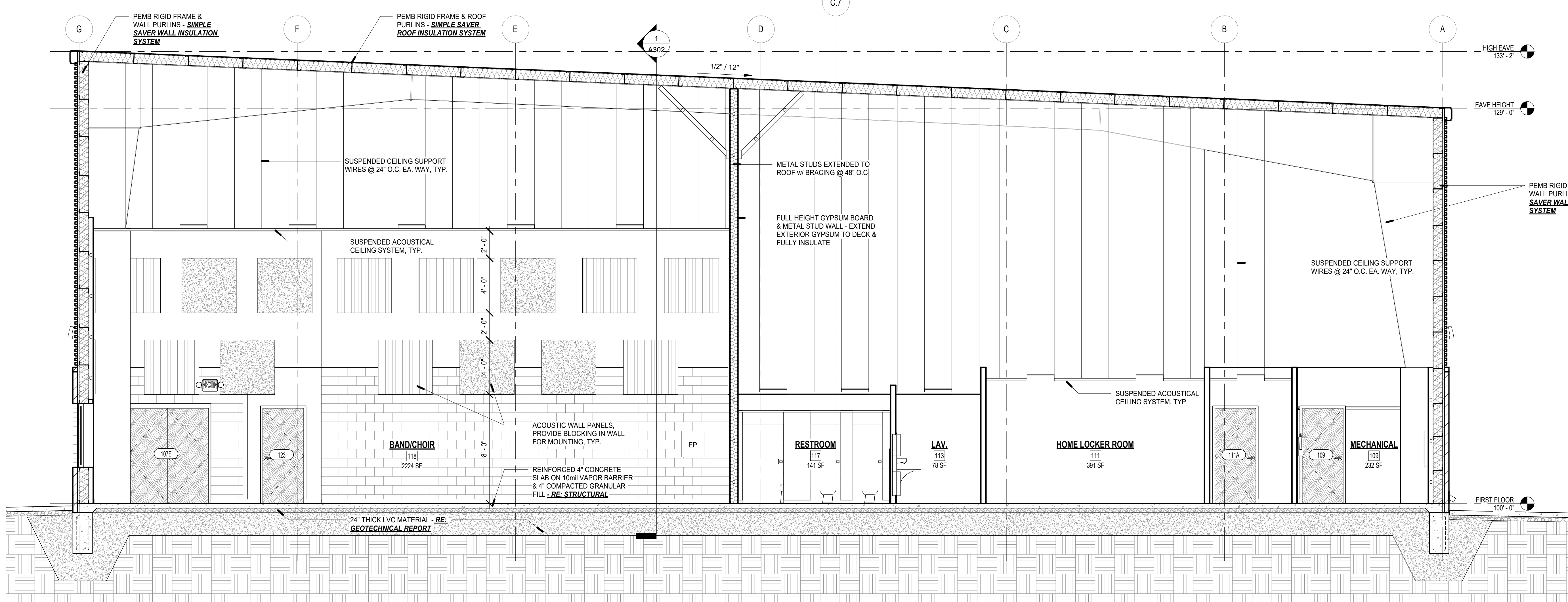
8/14/2023

SHEET NUMBER

A202

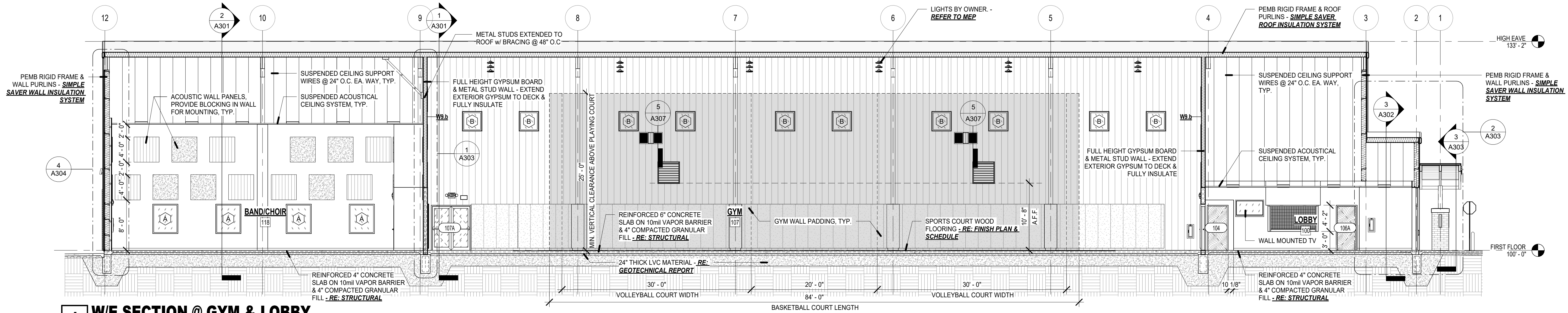


1 N/S SECTION @ GYM
1/4" = 1'-0"

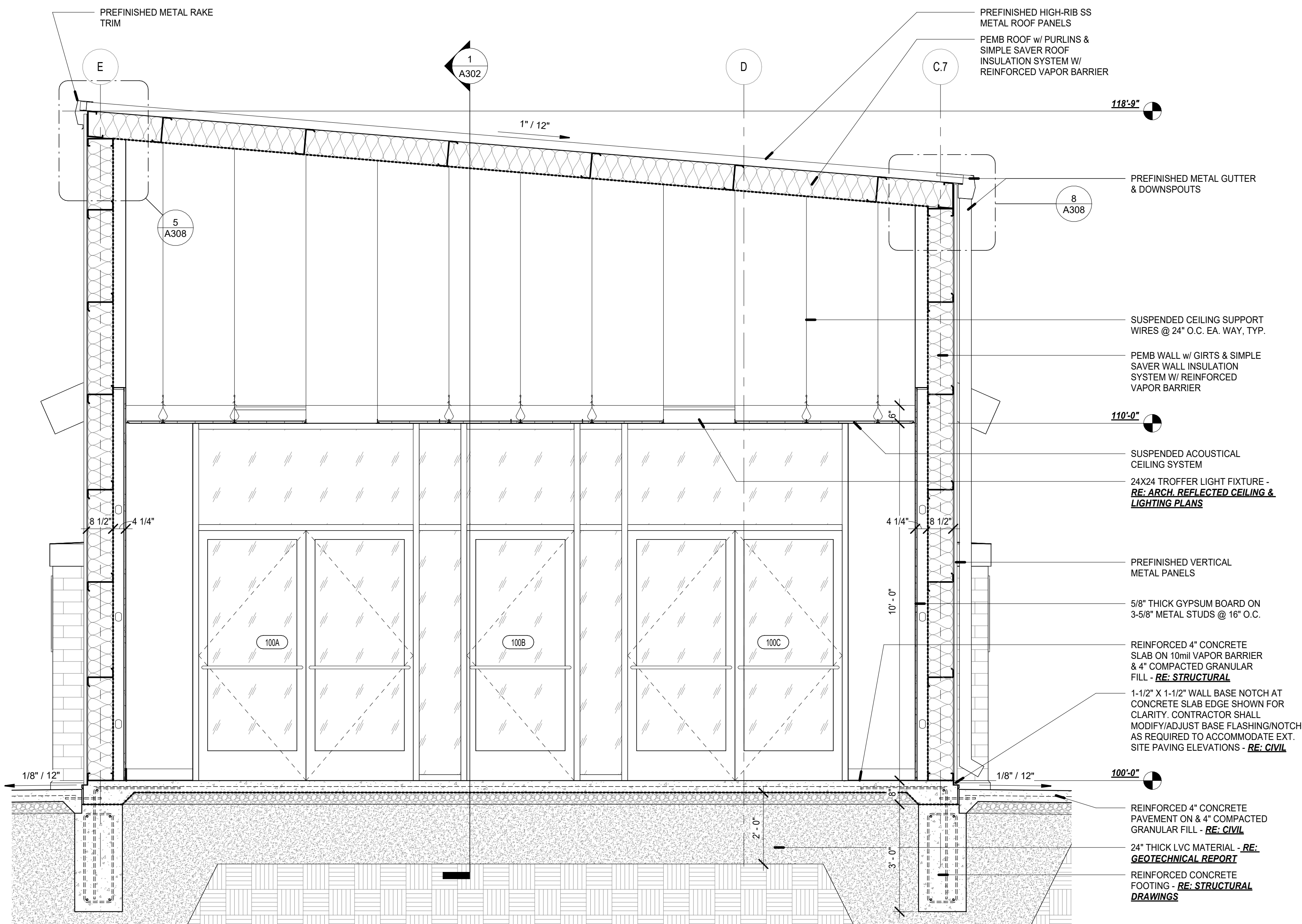


2 N/S SECTION @ LOCKER ROOM
1/4" = 1'-0"

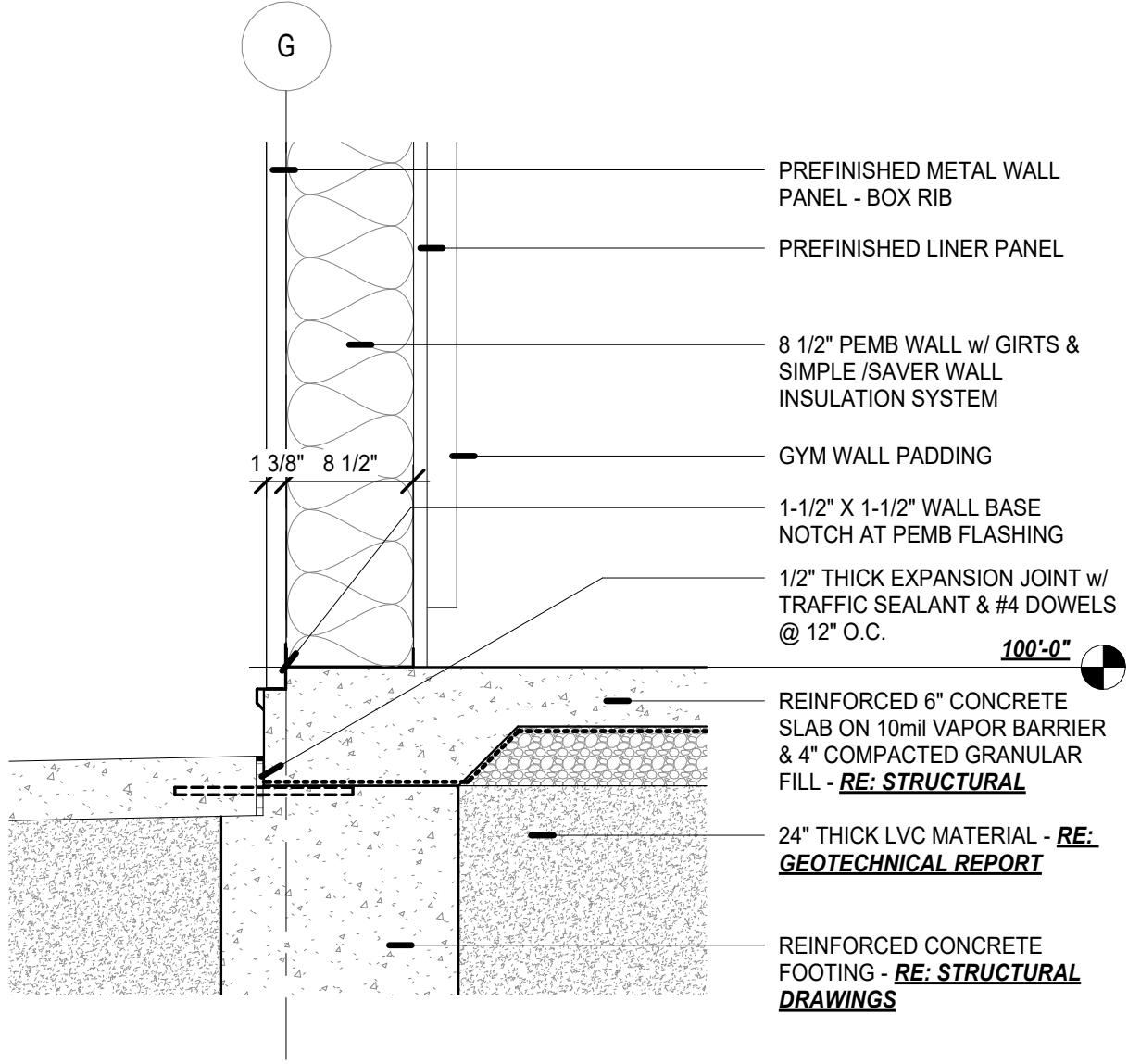




1 W/E SECTION @ GYM & LOBBY
1/8" = 1'-0"

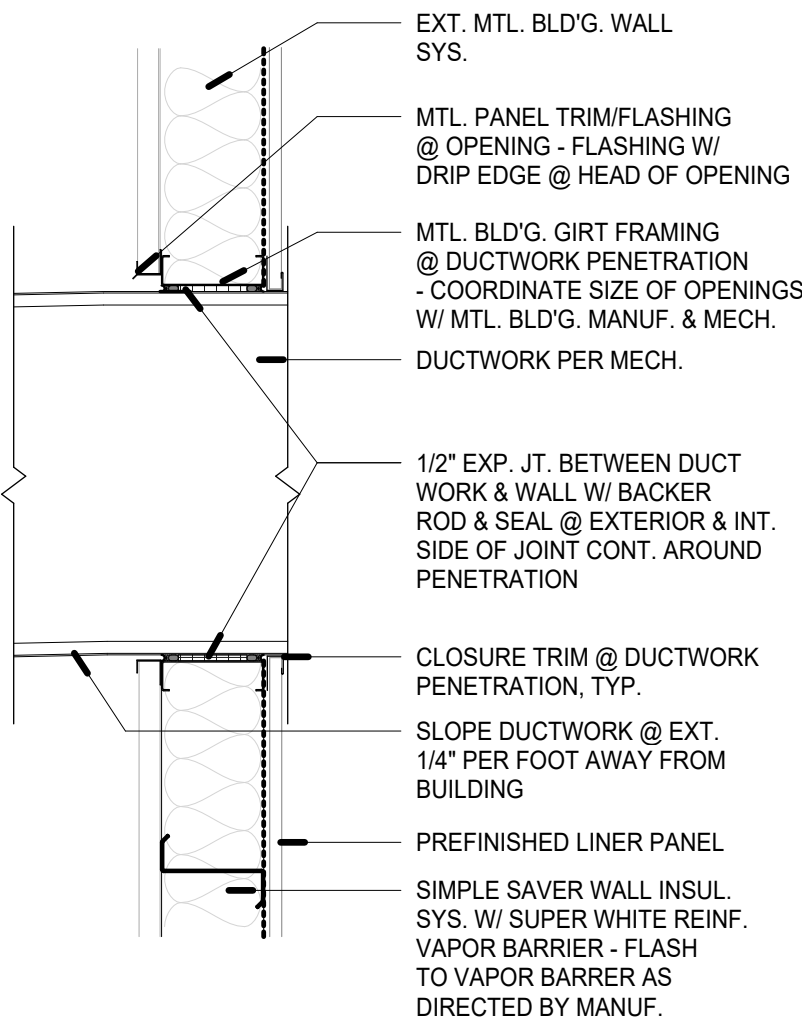


3 N/S SECTION @ ENTRY
1/2" = 1'-0"



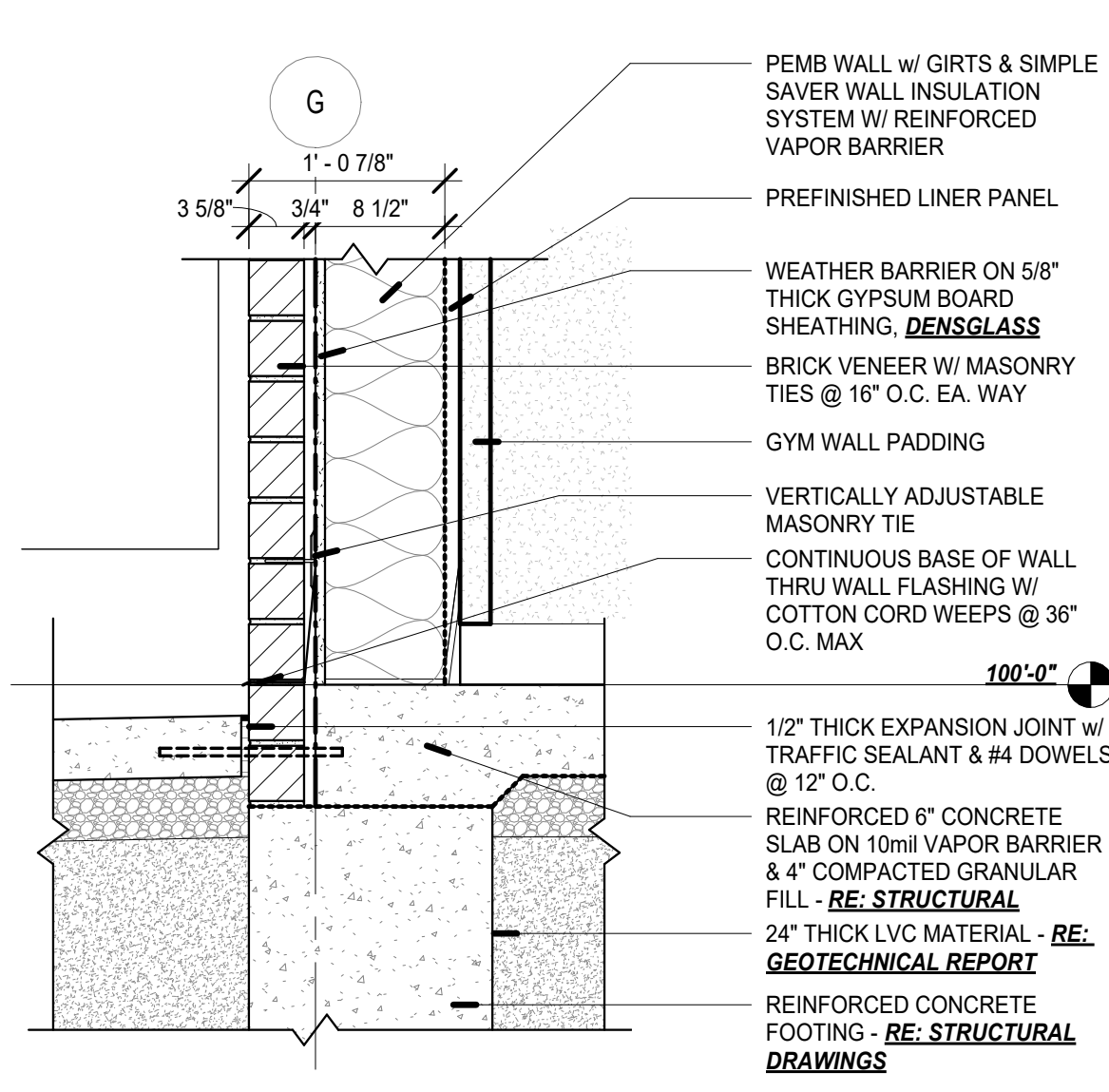
1 BASE OF EXTERIOR WALL DETAIL @ GYM - METAL

1" = 1'-0"



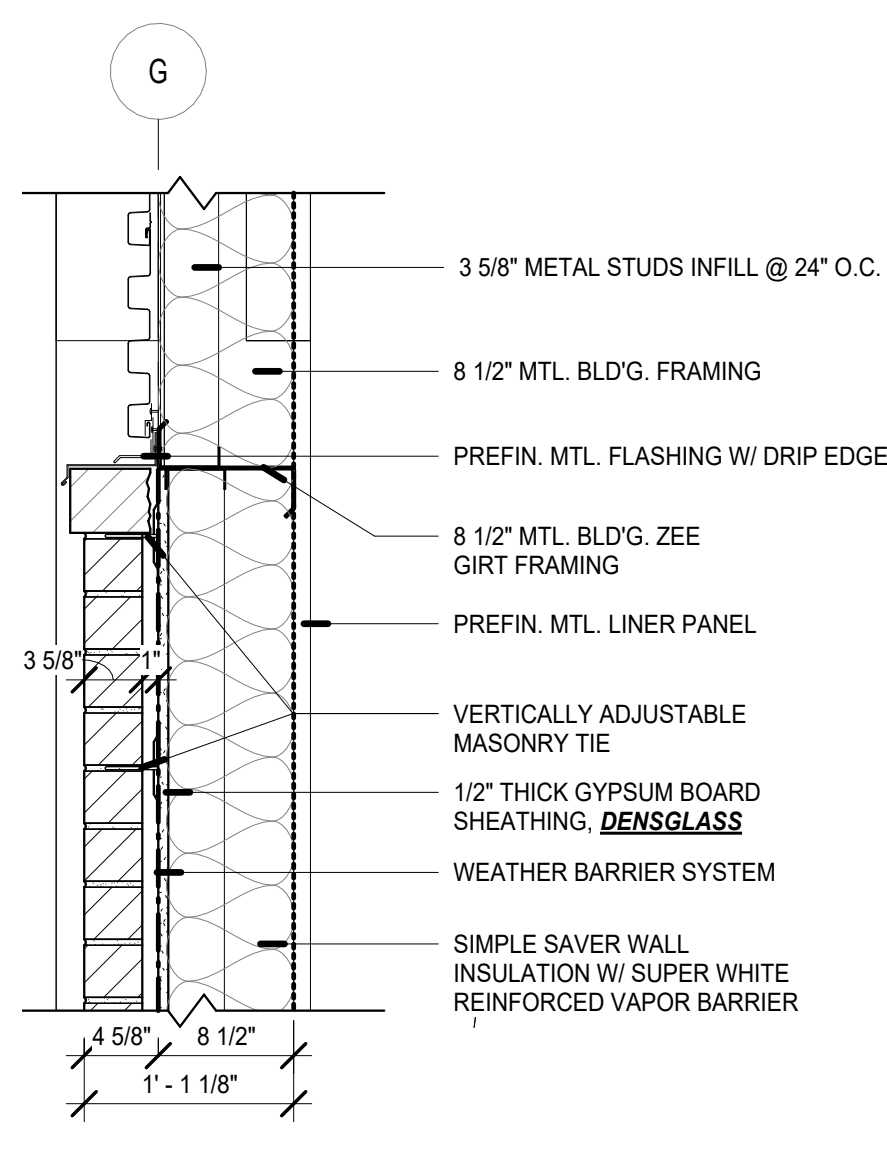
5 DUCTWORK FLASHING DETAIL

3/4" = 1'-0"



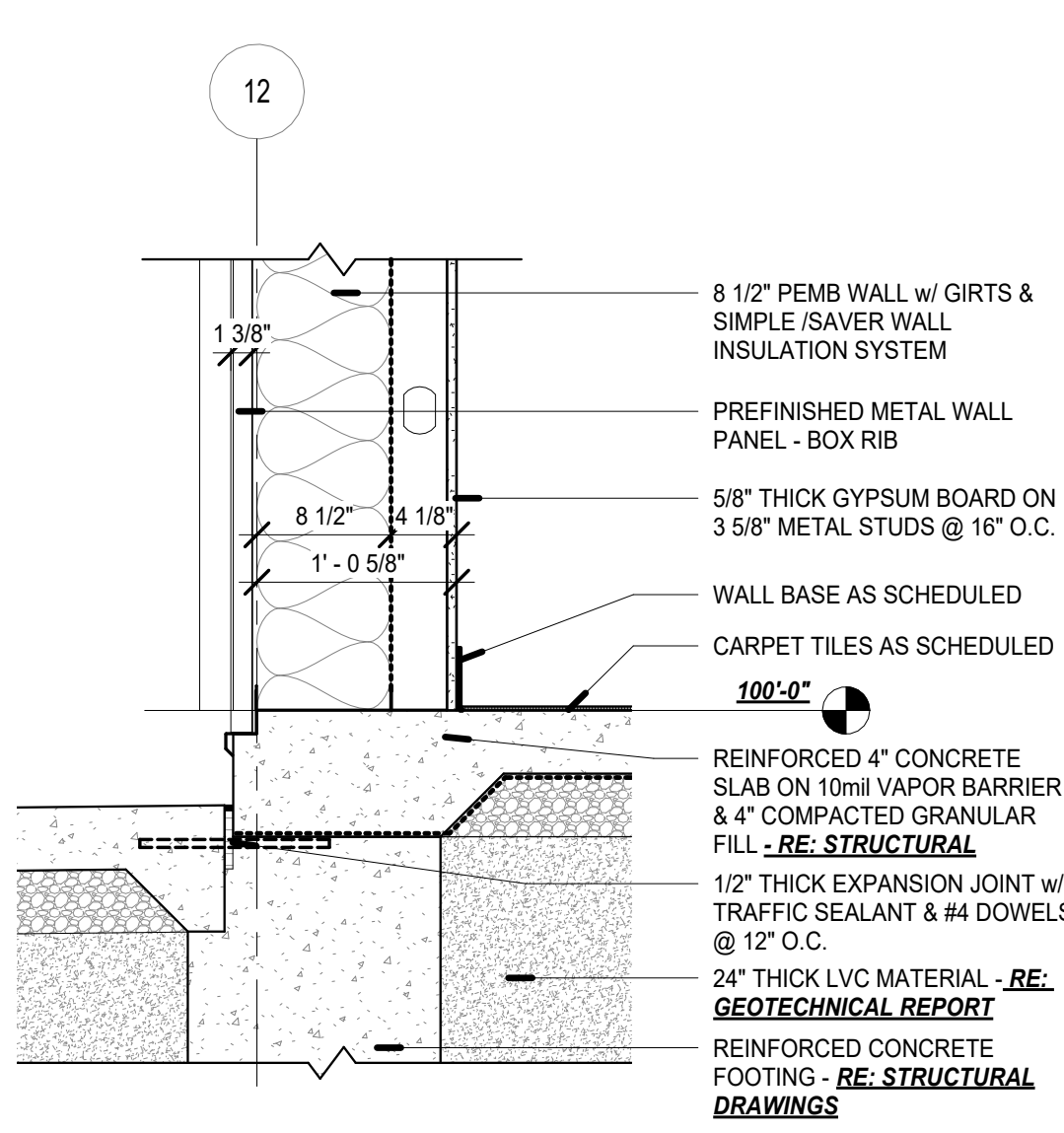
2 BASE OF WALL DETAIL @ GYM - BRICK

1" = 1'-0"



3 BRICK/METAL DETAIL @ GYM

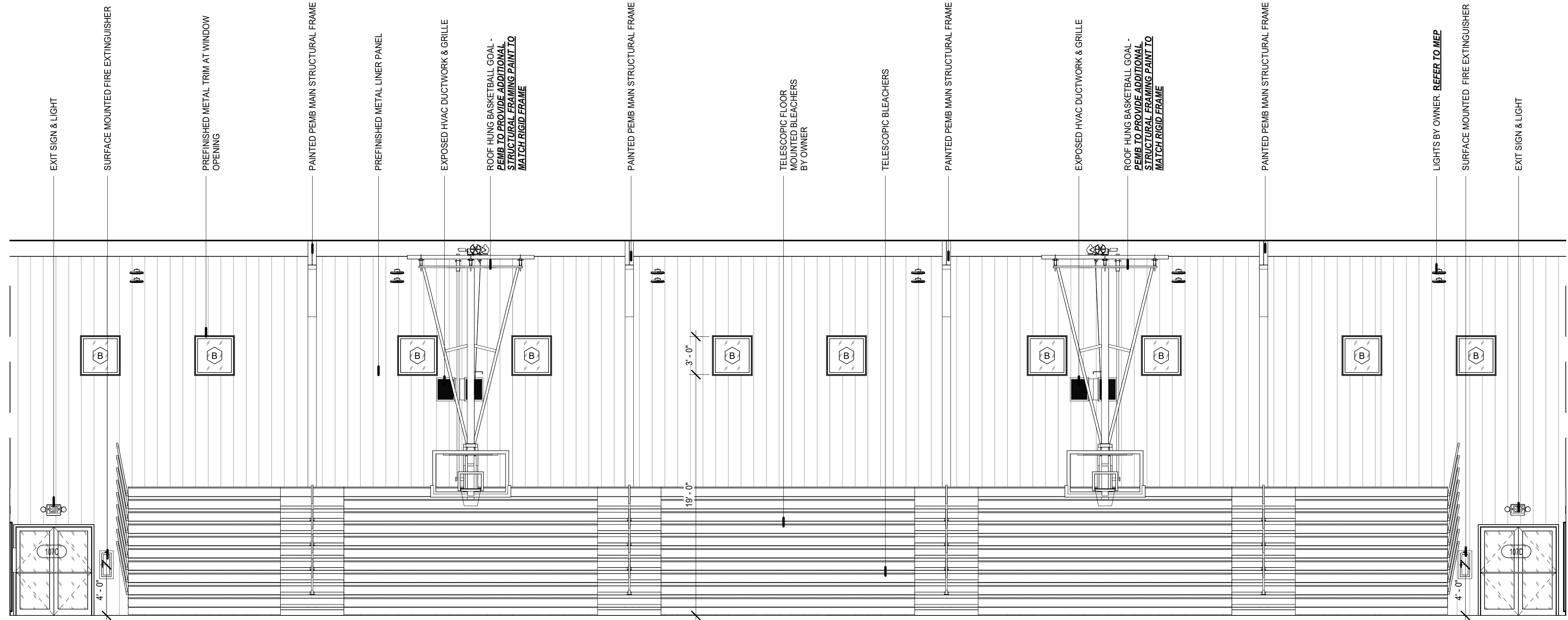
1" = 1'-0"



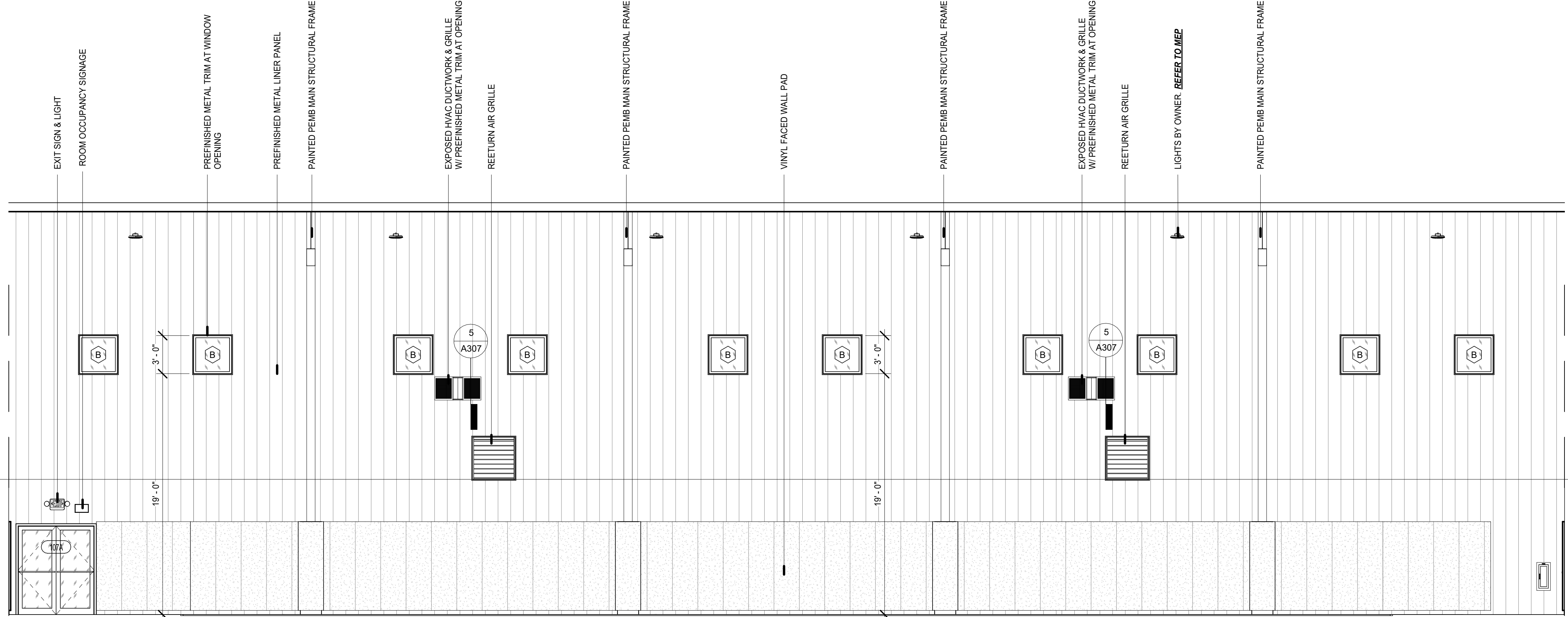
4 BASE OF WALL @ BAND ROOM

1" = 1'-0"





2 GYM SOUTH ELEVATION
3/16" = 1'-0"



1 GYM NORTH ELEVATION
3/16" = 1'-0"

- ELEVATION GENERAL NOTES:**
- REFER TO SHEET A503 FOR WINDOW TYPE, SIZE, AND LOCATION

NEW CONSTRUCTION

A NEW GYM FOR USD506

601 HIGH SCHOOL AVE., ALTAMONT, KS 67330

DRAWING

GYM ELEVATIONS

MANAGER
SAC

DRAWN BY
KG

REVISIONS

PROJECT NUMBER
23-09

DATE
8/14/2023

SHEET NUMBER

ECHELON
ARCH + DESIGN

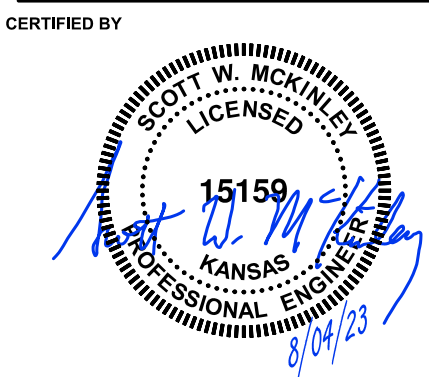
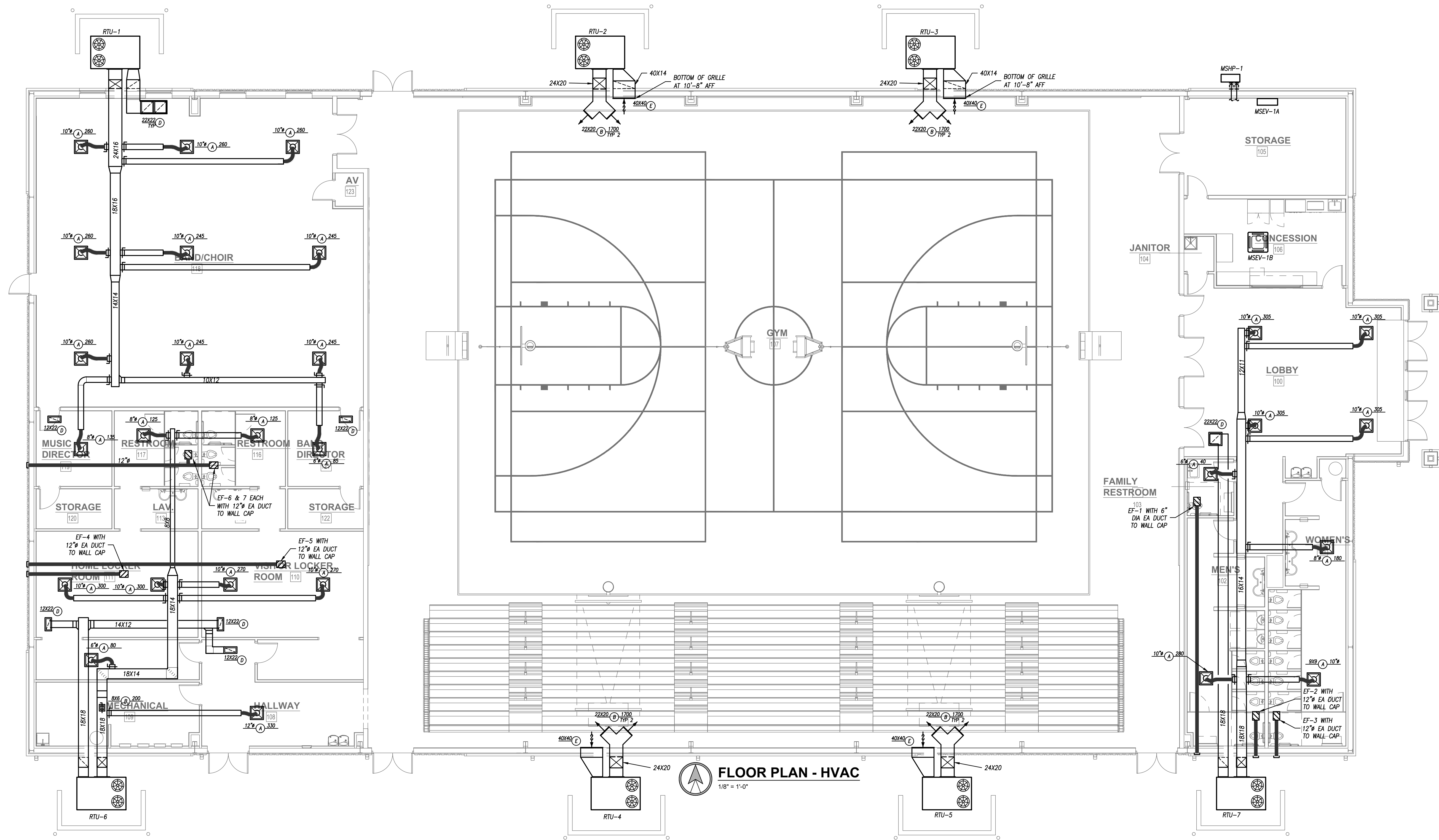
107 1/2 N. PENNSYLVANIA AVE.
SUITE 2F
INDEPENDENCE, KANSAS 67301

620-331-6171
www.EchelonAD.com

CERTIFIED BY

James M. King
Professional Engineer
7329
8/14/2023
KANSAS
PE-11752

A405



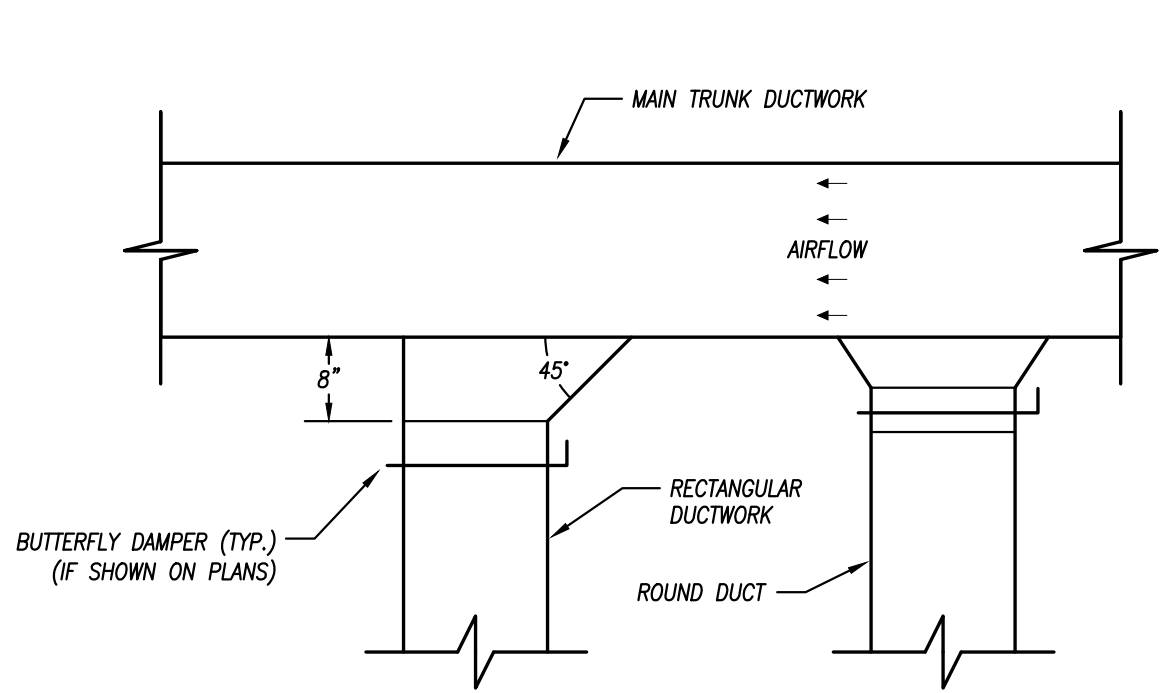
NEW CONSTRUCTION

A NEW GYM FOR USD506

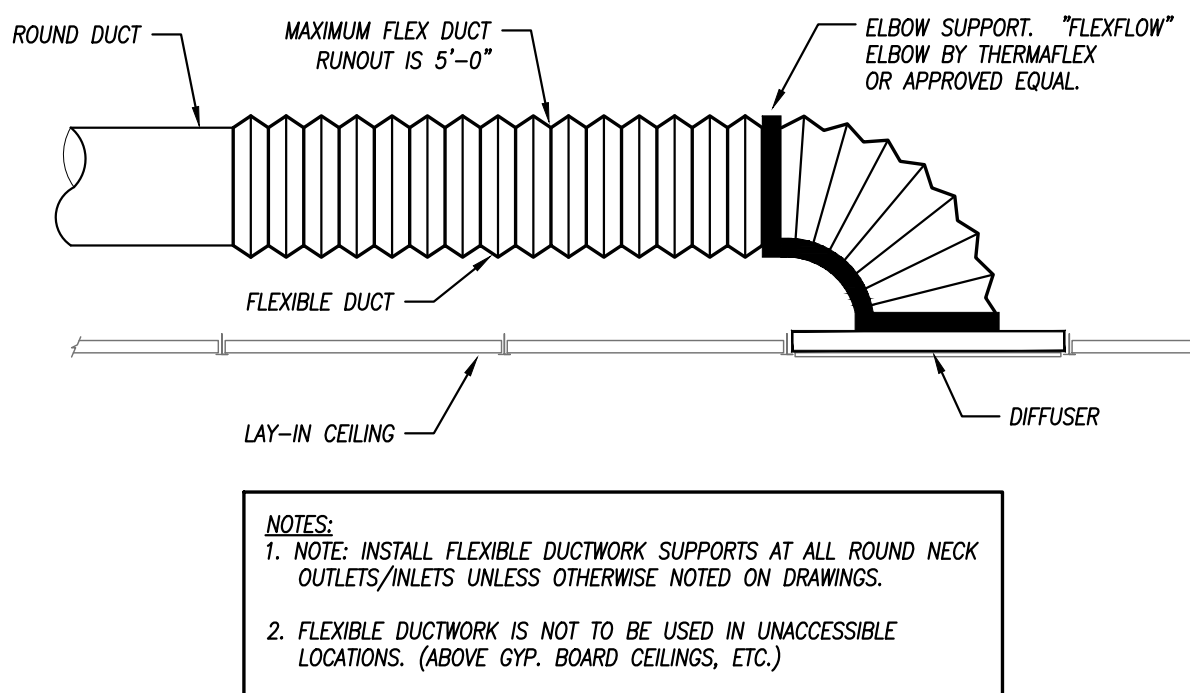
601 HIGH SCHOOL AVE. ALTAMONT, KS 67330

HVAC PLAN	
MANAGER	DRAWN BY
SWM	NSG
REVISIONS	
PROJECT NUMBER	
23-09	
DATE	
08/04/2023	
SHEET NUMBER	

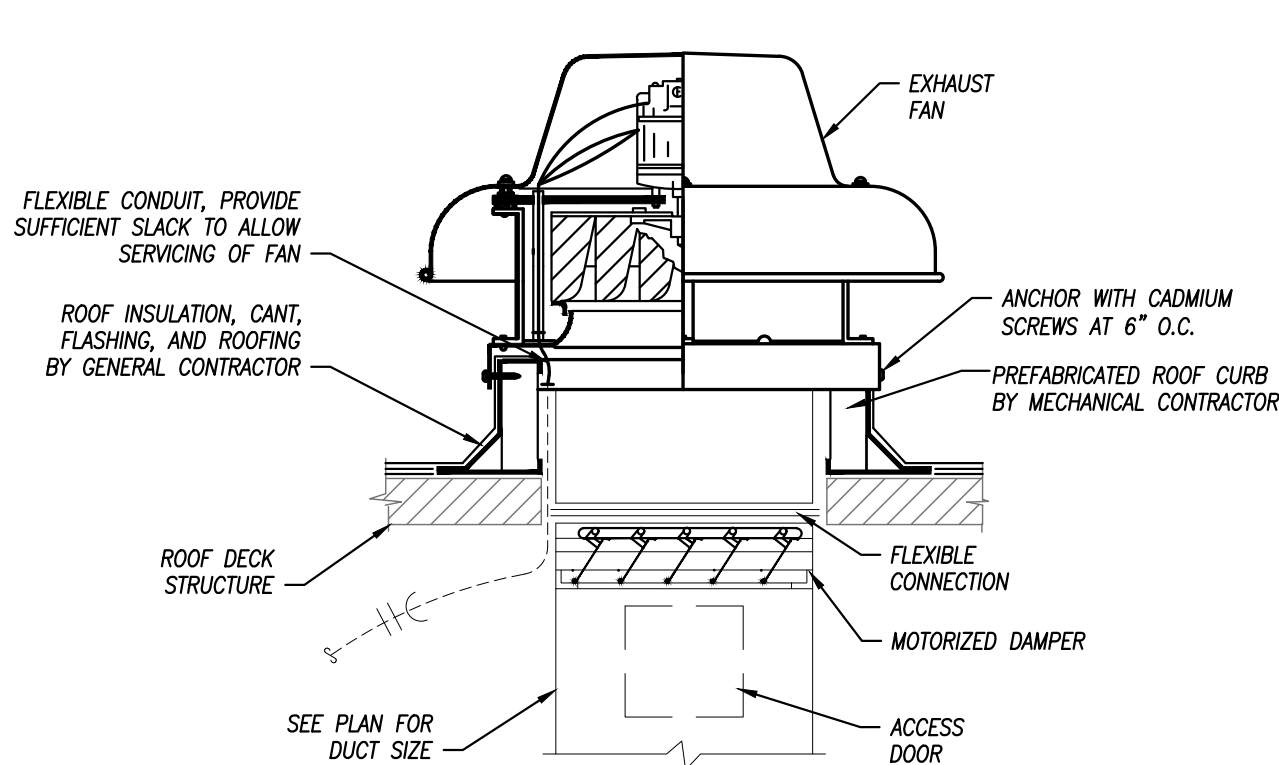
M1



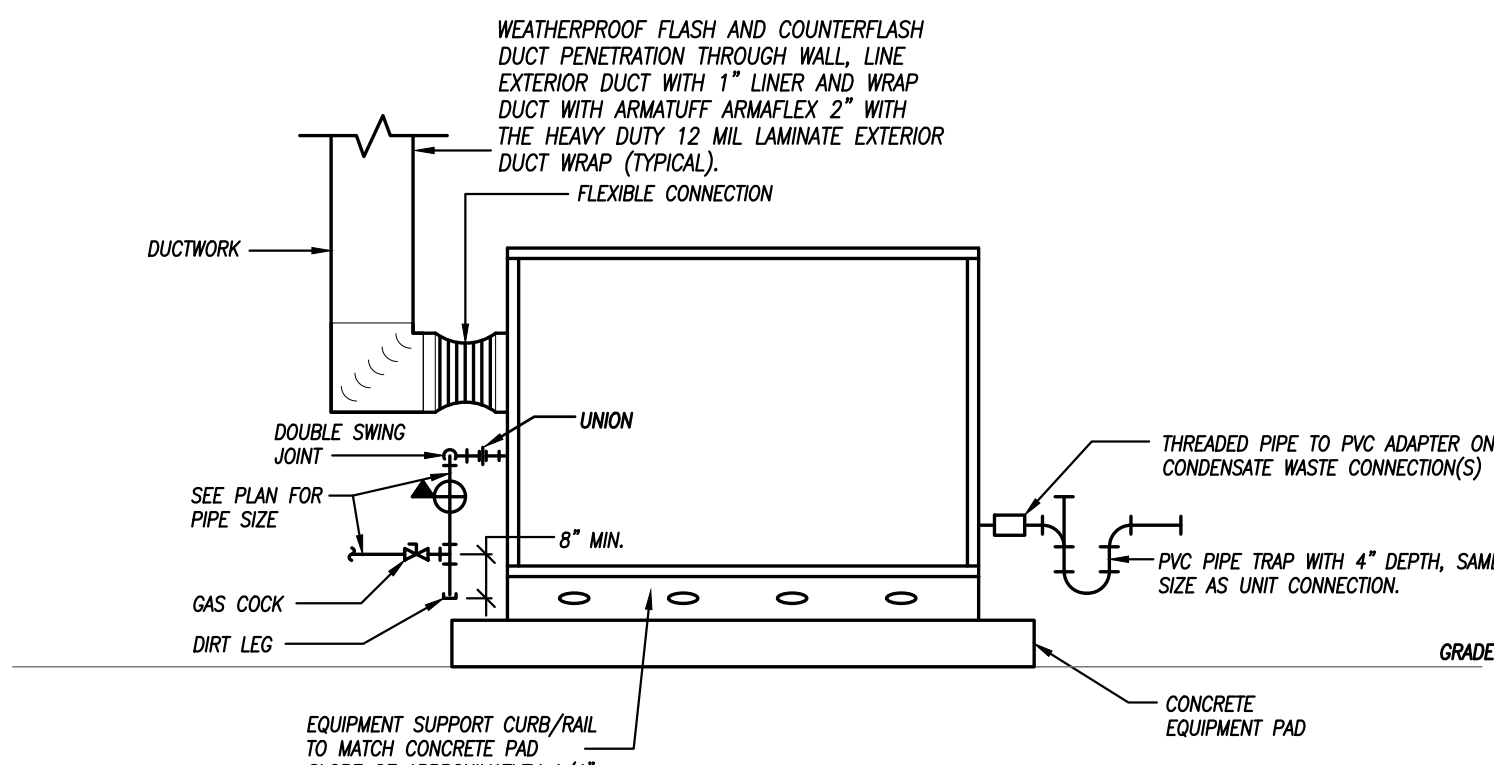
DUCTWORK TAKEOFF
NOT TO SCALE



FLEXIBLE DUCT CONNECTION TO DIFFUSER
NOT TO SCALE



EXHAUST FAN DETAIL
NOT TO SCALE



GROUND MOUNTED RTU DETAIL
NOT TO SCALE

DUCTWORK INSULATION SCHEDULE							
PURPOSE		DUCT		INSULATION		THICKNESS	NOTES
PURPOSE	DUTY	LOCATION	STYLE	MATERIAL	APPLICATION		
SUPPLY	LOW PRESSURE/VELOCITY	CONCEALED	RECTANGULAR	FIBERGLASS	LINED	1/2"	----
		CONCEALED	ROUND	MINERAL FIBER	WRAPPED	1-1/2"	----
		EXPOSED	RECTANGULAR	FIBERGLASS	LINED	1/2"	----
		EXPOSED	ROUND	FIBERGLASS	LINED	1/2"	----
	ALL	UNCONDITIONED ATTICS	ALL	MINERAL FIBER	WRAPPED	1-1/2"	1
RETURN	LOW PRESSURE/VELOCITY	EXTERIOR	ALL	FLEXIBLE ELASTOMERIC	WRAPPED	2"	----
		CONCEALED	RECTANGULAR	FIBERGLASS	LINED	1/2"	----
		CONCEALED	ROUND	MINERAL FIBER	WRAPPED	1-1/2"	----
		EXPOSED	RECTANGULAR	FIBERGLASS	LINED	1/2"	----
	ALL	RETURN/TRANSFER BOOTS	RECTANGULAR	FIBERGLASS	LINED	1/2"	----
EXHAUST	LOW PRESSURE/VELOCITY	UNCONDITIONED ATTICS	ALL	MINERAL FIBER	WRAPPED	1-1/2"	1
		EXTERIOR	ALL	FLEXIBLE ELASTOMERIC	WRAPPED	2"	----
		CONCEALED	RECTANGULAR	FIBERGLASS	LINED	1/2"	----
		CONCEALED	ROUND	FIBERGLASS	LINED	1/2"	2
	ALL	EXPOSED	RECTANGULAR	FIBERGLASS	LINED	1/2"	2
NOTES:							
1. IN ADDITION TO OTHER SCHEDULED INSULATION.							
2. PROVIDE LINER ONLY WITHIN 10" OF FAN FOR ACCOUSTICS.							
GENERAL REMARKS (APPLICABLE TO ALL TYPES):							
1) ALL DUCTWORK, INSULATION AND MATERIALS IN PLENUMS MUST MEET ASTM E84 FLAME/SMOKE RATING OF 25/50.							
2) ALL INSULATION THICKNESSES SHALL MEET ASHRAE 90.1 - 2010 REQUIREMENTS AT A MINIMUM.							
3) REFER TO SPECIFICATIONS FOR MORE DETAILED INFORMATION FOR INSULATION PRODUCTS AND SYSTEMS.							

OWNER WILL PURCHASE THIS EQUIPMENT, CONTRACTOR TO RECEIVE AND INSTALL EQUIPMENT

ROOF TOP UNIT SCHEDULE - THREE PHASE ELECTRIC WITH GAS HEAT															
PLAN MARK	MANUFACTURER	MODEL NUMBER	SIZE	REFRIGERANT	MINIMUM EFFICIENCY	AIRFLOW	COMPRESSORS	COOLING CAPACITY	CFM	EXTERNAL STATIC	OA CFM	HEATING CAPACITY	ELECTRICAL	WEIGHT	FILTER
RTU-1	LUXAIRE	ZJ-090 N18B2B	7.5 TON	R-410A	13 IEER	HORIZONTAL	(2) SCROLLS	88,000 BTUH	2,500	0.7"	300	120 MBH	208 V, 3 PH, 60 AMP	1100 LBS	MERV 13
RTU-2	LUXAIRE	ZJ-120 N18B2B	10 TON	R-410A	12.8 IEER	HORIZONTAL	(2) SCROLLS	124,000 BTUH	3,400	0.7"	350	180 MBH	208 V, 3 PH, 60 AMP	1200 LBS	MERV 13
RTU-3	LUXAIRE	ZJ-120 N18B2B	10 TON	R-410A	12.8 IEER	HORIZONTAL	(2) SCROLLS	124,000 BTUH	3,400	0.7"	350	180 MBH	208 V, 3 PH, 60 AMP	1200 LBS	MERV 13
RTU-4	LUXAIRE	ZJ-120 N18B2B	10 TON	R-410A	12.8 IEER	HORIZONTAL	(2) SCROLLS	124,000 BTUH	3,400	0.7"	350	180 MBH	208 V, 3 PH, 60 AMP	1200 LBS	MERV 13
RTU-5	LUXAIRE	ZJ-120 N18B2B	10 TON	R-410A	12.8 IEER	HORIZONTAL	(2) SCROLLS	124,000 BTUH	3,400	0.7"	350	180 MBH	208 V, 3 PH, 60 AMP	1200 LBS	MERV 13
RTU-6	LUXAIRE	ZJ-061 N08B2B	5 TON	R-410A	14.5 SEER	HORIZONTAL	(2) SCROLLS	59,000 BTUH	2,000	0.7"	200	80 MBH	208 V, 3 PH, 45 AMP	800 LBS	MERV 13
RTU-7	LUXAIRE	ZJ-061 N08B2B	5 TON	R-410A	14.5 SEER	HORIZONTAL	(2) SCROLLS	59,000 BTUH	2,000	0.7"	200	80 MBH	208 V, 3 PH, 45 AMP	800 LBS	MERV 13

- NOTES LEGEND
- PROVIDE CONCRETE PAD, DISCONNECT SWITCH, HAIL GUARDS, HOT GAS HUMIDITY CONTROL, AND ECONOMIZER
 - PROVIDE WALL MOUNTED 7-DAY PROGRAMMABLE THERMOSTAT
 - PROVIDE INTERNAL VIBRATION ISOLATION FOR THE RTU FAN AND COMPRESSORS
 - PROVIDE EQUIPMENT SUPPORT CURB/RAIL TO MATCH CONCRETE PAD SLOPE OF APPROXIMATELY 1/4" PER FOOT SLOPE

OWNER WILL PURCHASE THIS EQUIPMENT, CONTRACTOR TO RECEIVE AND INSTALL EQUIPMENT

MINI-SPLIT DUCTLESS HEAT PUMP SCHEDULE										
PLAN MARK	MANUFACTURER	MODEL NUMBER	NOMINAL SIZE	COOLING MBH	HEATING MBH (47° AMBIENT)	HEATING MBH (5° AMBIENT)	ELECTRICAL	MOCP AMPS	MIN CIRCUIT AMPS	DISCONNECT
MSHP-1	mitsubishi	NTXMPH20A122B	1.5 TON	19.0	22.0	22.0	208/240V, 1#	40	29.5	YES

- NOTES LEGEND
- PROVIDE WIRED REMOTE THERMOSTAT, AND CONDENSATE PUMP.
 - VERIFY EXACT REFRIGERANT LINE SIZES WITH MANUFACTURER.

OWNER WILL PURCHASE THIS EQUIPMENT, CONTRACTOR TO RECEIVE AND INSTALL EQUIPMENT

MINI-SPLIT DUCTLESS EVAPORATOR SCHEDULE								
PLAN MARK	MANUFACTURER	MODEL NUMBER	NOMINAL SIZE	MAX CFM CLGHTG	ENTERING AIR DRY/WET	COOLING MBH	HEATING MBH	NOTES
MSEV-1A	mitsubishi	NTXWPH09B112A	0.75 TON	380/430	80/67	9.0	9.6	208/240V, 1#
MSEV-1B	mitsubishi	NTXCKS09A112A	0.75 TON	230/230	80/67	9.0	11.0	208/240V, 1#

- NOTES LEGEND
- PROVIDE WIRED REMOTE THERMOSTAT, AND CONDENSATE PUMP.
 - VERIFY EXACT REFRIGERANT LINE SIZES WITH MANUFACTURER.

EXHAUST FAN SCHEDULE

PLAN MARK	MANUFACTURER	MODEL NUMBER	MOUNTING	SERVICE	CFM	STATIC PRESSURE	ELECTRICAL	DRIVE	DISCONNECT	DAMPER	NOTES
EF-1	GREENHECK	SP-B90	CEILING	EXHAUST	75	1/4"	50 WATTS, 120V, 1 PHASE	DIRECT	YES	BACKDRAFT	1
EF-2	GREENHECK	SP-A510	CEILING	EXHAUST	450	1/4"	224 WATTS, 120V, 1 PHASE	DIRECT	YES	BACKDRAFT	3
EF-3	GREENHECK	SP-A700	CEILING	EXHAUST	525	1/4"	350 WATTS, 120V, 1 PHASE	DIRECT	YES	BACKDRAFT	3
EF-4	GREENHECK	SP-A700	CEILING	EXHAUST	500	1/4"	350 WATTS, 120V, 1 PHASE	DIRECT	YES	BACKDRAFT	3
EF-5	GREENHECK	SP-A700	CEILING	EXHAUST	500	1/4"	350 WATTS, 120V, 1 PHASE	DIRECT	YES	BACKDRAFT	3
EF-6	GREENHECK	SP-A250	CEILING	EXHAUST	225	1/4"	83 WATTS, 120V, 1 PHASE	DIRECT	YES	BACKDRAFT	3
EF-7	GREENHECK	SP-A250	CEILING	EXHAUST	225	1/4"	83 WATTS, 120V, 1 PHASE	DIRECT	YES	BACKDRAFT	4

- NOTES:
- PROVIDE WITH WALL DISCHARGE MODEL WC-6 WITH BUILT IN BIRDSCREEN AND BACK DRAFT DAMPER.
 - PROVIDE WITH WALL DISCHARGE HOODED WALL CAP MODEL WC-8 WITH BUILT IN BIRDSCREEN AND BACK DRAFT DAMPER.
 - PROVIDE WITH WALL DISCHARGE HOODED WALL CAP MODEL WC-18X8 WITH BUILT IN BIRDSCREEN AND BACK DRAFT DAMPER.
 - SHARE WALL CAP WITH EF-6

GRILLE, REGISTER & DIFFUSER SCHEDULE

PLAN MARK	MANUFACTURER	MODEL NUMBER	SERVICE	MOUNT TYPE	VOLUME DAMPER	MATERIAL	MATERIAL COLOR	NOTES
A	PRICE	SMD-3P	SUPPLY	GRID	NO	STEEL	WHITE	2
B	PRICE	520-D	SUPPLY	FLANGE	YES	STEEL	WHITE	
C	NOT USED							
D	PRICE	535-O	RETURN/EXHAUST	GRID	NO	STEEL	WHITE	1
E	TITUS	33RL-HEAVY DUTY	RETURN	FLANGE	NO	STEEL	WHITE	

- NOTES LEGEND
- PROVIDE WITHOUT SCREW HOLES WHERE USED IN A GRID CEILING
 - PAN TO FIT A 2'X2' GRID.

